

Contact Plus and Droplet with Eye Protection Precautions

Healthcare workers:

Required before entering the room

- Hand hygiene
- Gown
- Surgical mask
- Eye protection
- Gloves

Required before exiting the room

- Wash hands with soap and water
- Clean and disinfect equipment with bleach after use

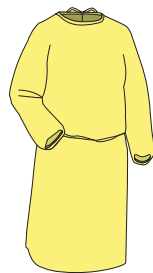


Alcohol gel in

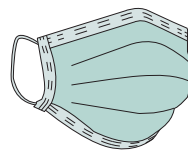


Soap and water out

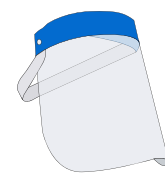
Gown



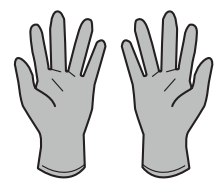
Surgical mask



Eye protection



Gloves



Patient must wear surgical mask when out of the room.